

# Art-Merge

## User Guide



***Artistic Licence Engineering Ltd***

Manual Revision V1.2 for Software Revision V1.00



# PRODUCT REGISTRATION FORM

Product: *Art-Merge*

Version No.

Serial No.

Date Purchased:

Supplier:

Output Device:

Name:

Company Name:

Address:

Post/Zip Code:

Phone No.

Comments:

Please return to: Artistic Licence Engineering Ltd.

The Mould Making Workshop, Soby Mews, Bovey Tracey, TQ13 9JG UK

**Fax: +44 (0) 20 84 26 05 51**



# C O N T E N T S

<b>PRODUCT REGISTRATION FORM</b> .....	<b>3</b>
<b>CONTENTS</b> .....	<b>5</b>
<b>INTRODUCTION</b> .....	<b>7</b>
<b>OVERVIEW</b> .....	<b>7</b>
<b>PHYSICAL DEVICES</b> .....	<b>7</b>
<b>ART-NET</b> .....	<b>8</b>
<b>INSTALLATION</b> .....	<b>9</b>
<b>WINDOWS 2000, NT &amp; XP USERS</b> .....	<b>9</b>
<b>ADMINISTRATOR RIGHTS</b> .....	<b>10</b>
<b>SOFTWARE INSTALLATION</b> .....	<b>11</b>
<b>SOFTWARE REGISTRATION</b> .....	<b>12</b>
<b>CONFIGURATION</b> .....	<b>12</b>
<b>ART-NET</b> .....	<b>12</b>
<b>OPERATION</b> .....	<b>14</b>
<b>OVERVIEW</b> .....	<b>14</b>
<b>CONFIGURE INPUTS</b> .....	<b>15</b>
<b>CONFIGURE OUTPUTS</b> .....	<b>16</b>
<b>OPERATION</b> .....	<b>16</b>



# I N T R O D U C T I O N

## OVERVIEW

Art-Merge is a software application that allows up to twenty Art-Net data sources to be merged to four outputs.

The data sources can be any Art-Net universes and channel offset and range is fully supported.

To check for future software releases, go to:

[www.ArtisticLicence.com/Download.htm](http://www.ArtisticLicence.com/Download.htm)

---

## PHYSICAL DEVICES

Any Art-Net compatible devices can be used for DMX512 input and output. These include:

### Input:

- Ether-Lynx (2)
- Net-Lynx IP (2)
- Up-Lynx (2)
- Four-Play (4)

### Output:

- Ether-Lynx (4)
  - Net-Lynx IP (2)
  - Up-Lynx (2)
  - Four-Play (4)
-

---

## ART-NET

Art-Net is a new standard in Ethernet communication. The protocol is a public domain standard that is supported by a number of vendors including:

- Artistic Licence
- AC Lighting Ltd
- ACT Inc
- ADB
- Avab Transtechnic
- Avolites
- Barco
- Cameleon
- Celco
- Compulite
- Doug Fleenor Design
- Design & Drafting
- ELC Lighting
- Electronics Diversified
- Enttec
- Flying Pig
- Goddard Design Co
- Goldstage
- Green Hippo
- High End Systems
- Horizon
- IES
- I-Light Group
- Invisible Rival
- Jands Electronics Pty
- LeHigh Electric Products Co
- LewLight
- MA Lighting
- Martin Professional
- Medialon
- Mediamation
- Nondim Enterprises
- Robe Show Lighting
- SandNet
- Stage Research
- Sunset Dynamics
- Theatrelight Ltd,
- Touchlight Systems Ltd
- VNR Electronique SA
- Zero 88



---

## INSTALLATION

Art-Merge is a 32 bit application specifically designed to operate with Windows XP. Whilst it will operate on Windows 98, Windows ME, Windows NTv4 and Windows 2000, we advise that Windows XP be used to run actual shows..

The minimum specification PC is:

- Processor: Pentium
- Speed: 800MHz
- RAM: 512MB
- Operating System: Windows 95 / 98 / ME / 2K / XP
- Graphics: 800 x 800 8 bit Colour

---

### Windows 2000, NT & XP Users

The Windows 2000, Windows NT and Windows XP operating systems provide the concept of User Rights. This allows different users to be granted different access rights to the computer.

The highest level of access rights is called 'Administrator'. Art-Merge will NOT install correctly unless you are logged onto the computer with Administrator rights.

If your computer is part of a network, you must ask your system administrator to set the computer for Administrator rights.

If you are a single user, the following sequence shows how to change the settings:

## Administrator Rights

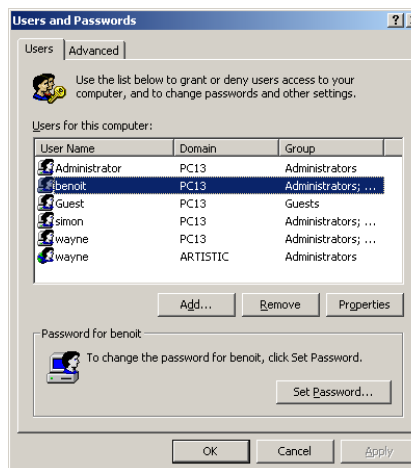
Administrator rights are set in the Windows Users & Passwords section:

To access this, select the Start Menu - Settings - Control Panel menu.



In the Control Panel, double click on the Users & Passwords icon. The following dialogue will be displayed:

Select the user who will install Colour-Tramp. In this example it is Benoit. Then press the Properties button.

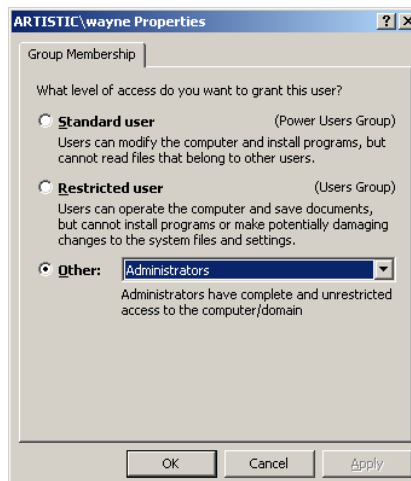


The following dialogue will then be displayed:

Select the 'Other' checkbox.

Select 'Administrators' from the pull down list.

Press OK. You should now restart Windows and then log on as the user name that you have edited.



---

Software  
Installation Art-Merge is supplied on CD. To install use the following procedure:

If you are upgrading, first uninstall the existing copy of Art-Merge and DMX-Workshop.

- Shutdown any applications running on your computer
  - Insert the CD in drive.
  - Wait for CD to start, then select 'Enter CD'.
  - Select the 'Software' button.
  - Select the 'Art-Merge' button.
  - Install Shield will then guide you through the remainder of the procedure.
  - When the installation completes, return to the CD menu and install DMX-Workshop.
  - Now follow the registration procedure.
-

Software  
Registration

Please remember to fax back your product registration so that we can keep you informed of new developments and upgrades.

## CONFIGURATION

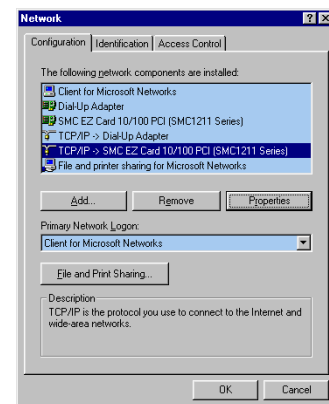
Before starting to use the system you will need to configure your chosen hardware. The process is very simple and is described below.

### Art-Net

To use Art-Merge with an Art-Net device, such as Ether-Lynx, Down-Lynx or Net-Lynx O/P, you must configure the PC Ethernet card. It is necessary to set two parameters, the IP address and the Subnet Mask.

These settings are adjusted in the Windows Network Settings Dialogue. To access this, select the Start Menu - Settings - Control Panel menu.

In the Control Panel, double click on the Network Icon. The following dialogue will be displayed:



Select the TCP/IP protocol line and then press the properties button.

The following dialogue will then be displayed:

Select the radio button marked 'Specify an IP Address'.

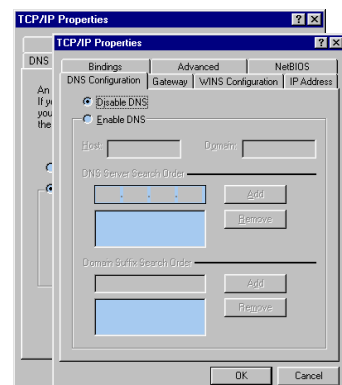
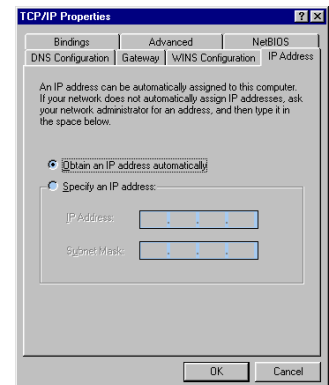
Type the number 2.0.0.1 into the first box.

Type the number 255.0.0.0 into the second box.

The display should be as follows:

Select the DNS Tab and click on disable DNS.

Press the OK button but do not restart the computer yet.



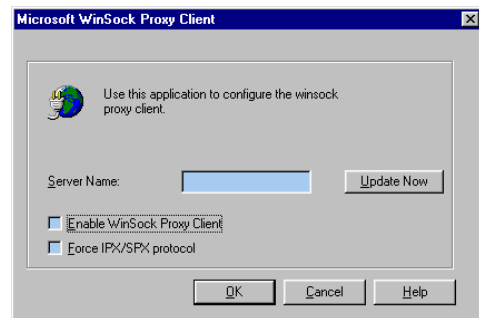
---

Double click on the 'WSP Client' icon in control panel.

Un-tick both boxes.

Press OK.

Now restart the computer.



When using the Art-Net output, ensure that your network is not connected to the Internet.

---

# O P E R A T I O N

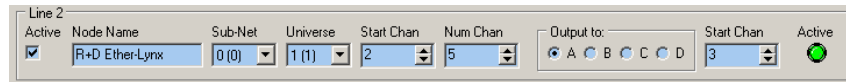
## **OVERVIEW**

Art-Merge is capable of routing or merging data from up to 20 Art-Net sources on to four Art-Net outputs. Each input allows the number of channels, the start input channel and the start output channel to be selected.

---

## CONFIGURE INPUTS

Each of the possible 20 inputs is controlled by the settings labelled 'Line X'.



The settings are:

**Active:** Tick the box if you wish to use this data source.

**Node Name:** This displays the short name of the node that is connected to this input line.

**Sub-Net:** This sets the value of the Art-Net Sub-Net to be used for this input line. On Ether-Lynx, Net-Lynx and Up-Lynx, the Sub-Net control wheel is in the centre of the product. The node wheel setting must match the value that you enter here.

**Universe:** This sets the value of the Art-Net Universe to be used for this input line. On Ether-Lynx, Net-Lynx and Up-Lynx, the Universe is set by a wheel located on the front panel. The node wheel setting must match the value that you enter here.

**Start Channel:** This is the DMX512 start channel from which you wish to route data.

**Num Chan:** This is the number of channels from the Start Channel that you wish to route.

**Output To:** This selects one of the four Art-Net outputs for this input line. Scroll to the bottom of the screen to configure the outputs.

**Output Start Chan:** This is the DMX512 channel at which you want the data to appear on the output.

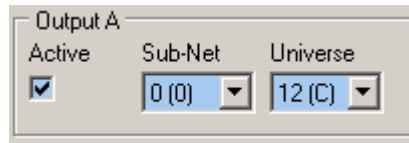
**Active LED:** This indicator will illuminate to show the presence of Art-Net data on the selected Sub-Net and Universe.

---

---

## CONFIGURE OUTPUTS

Each of the possible four outputs is controlled by the settings labelled 'Output X', located at the bottom of the screen.



The settings are:

Active: Tick the box if you wish to use this data output.

Sub-Net: This sets the value of the Art-Net Sub-Net to be used for this output line. On Ether-Lynx, Net-Lynx and Down-Lynx, the Sub-Net control wheel is in the centre of the product. The node wheel setting must match the value that you enter here.

Universe: This sets the value of the Art-Net Universe to be used for this output line. On Ether-Lynx, Net-Lynx and Down-Lynx, the Universe is set by a wheel located on the front panel. The node wheel setting must match the value that you enter here.

---

## OPERATION

Multiple input lines may be set to identical Sub-Net and Universe values. This allows multiple groups of channels to be gated out of the same input.

When output channel ranges are configured to overlap, the data is HTP merged to the output.

The insertion delay caused by this software is approximately 25mS or one DMX512 frame period.

All configuration settings are stored in registry.

To automatically start the application a boot, copy a shortcut of ArtMerge.exe to your startup folder.



## ***Artistic Licence***

© Artistic Licence Engineering Ltd. 2005-2018  
The Mould Making Workshop  
Soby Mews  
Bovey Tracey  
TQ13 9JG  
UK

Tel: +44 (0)20 88 63 45 15  
Fax: +44 (0)20 84 26 05 51  
Email: [Sales@ArtisticLicence.com](mailto:Sales@ArtisticLicence.com)



The information contained in this document is subject to change without notice. Artistic Licence Engineering Ltd. makes no warranty of any kind with regard to this material, including, but not limited to, the implied warranties of fitness for a particular purpose.

Artistic Licence Engineering Ltd. shall not be liable for errors contained herein or for incidental or consequential damages in connection with the furnishing, performance or use of this material.

All trademarks are acknowledged.