

Application Note 033: Setting Colour-Tramp for Time Lapse Video Mode

The customer brief is to use a video camera in order for the LED colour mixers installed in a building to mimic the colour of the sky.

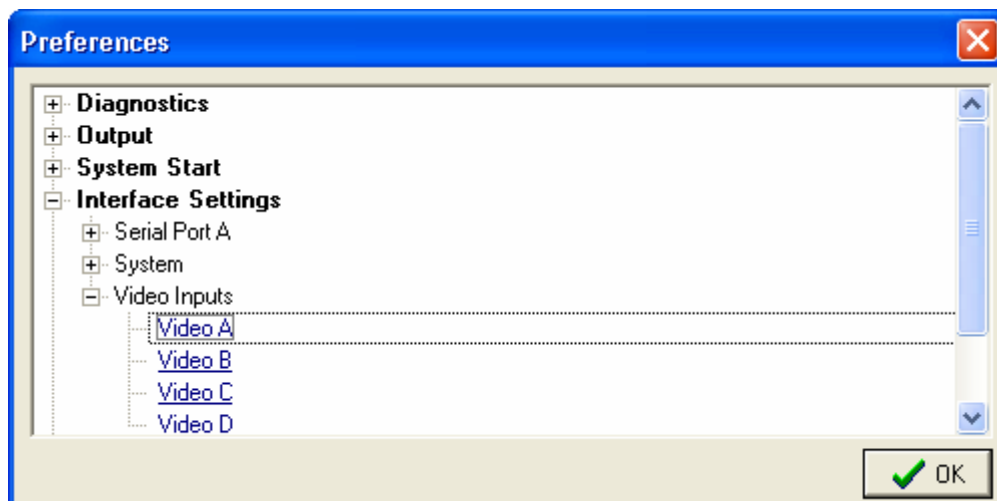
This can be achieved very easily with Colour-Tramp.

The Camera is rigged to point at the sky. A better result may be achieved by slightly de-focussing the camera.

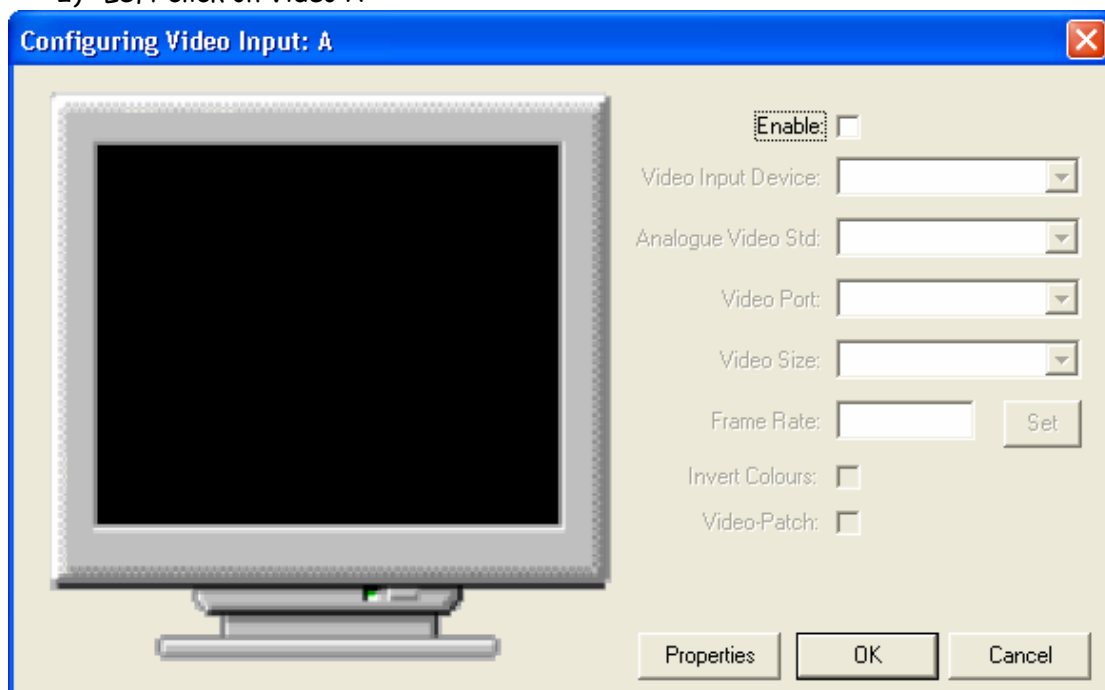
Connect the camera to Colour-Tramp and patch the lighting fixtures as normal.

Then follow these instructions:

- 1) Select the Tools - Preferences menu:



- 2) Left click on Video A

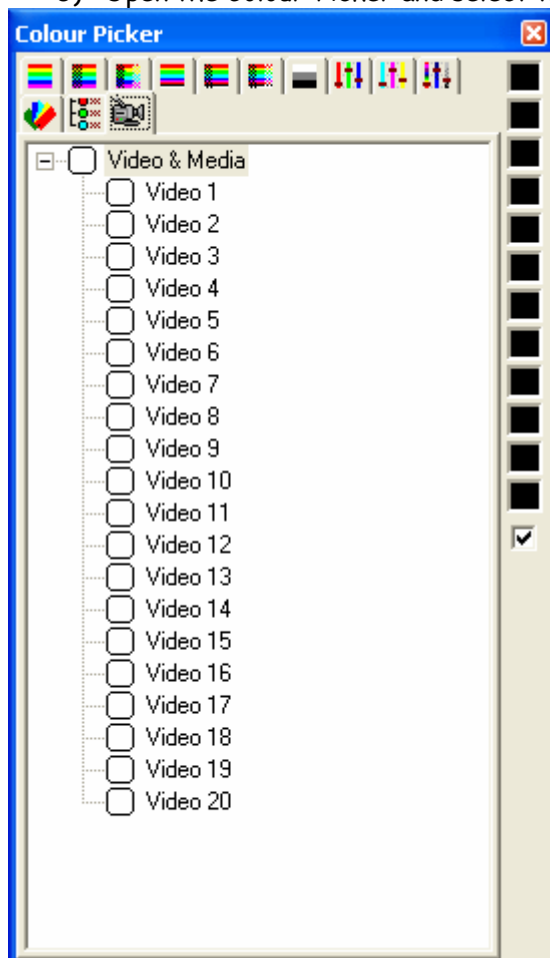


3) Click Enable:



4) Select the camera from the pull down list, then press OK price.

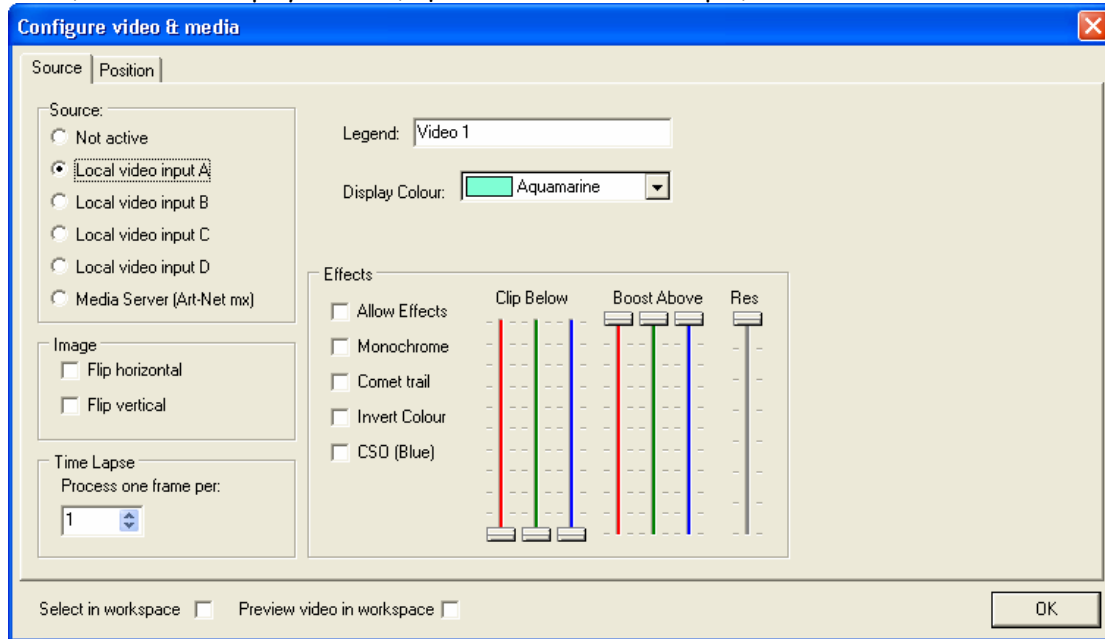
5) Open the Colour-Picker and select the video page:



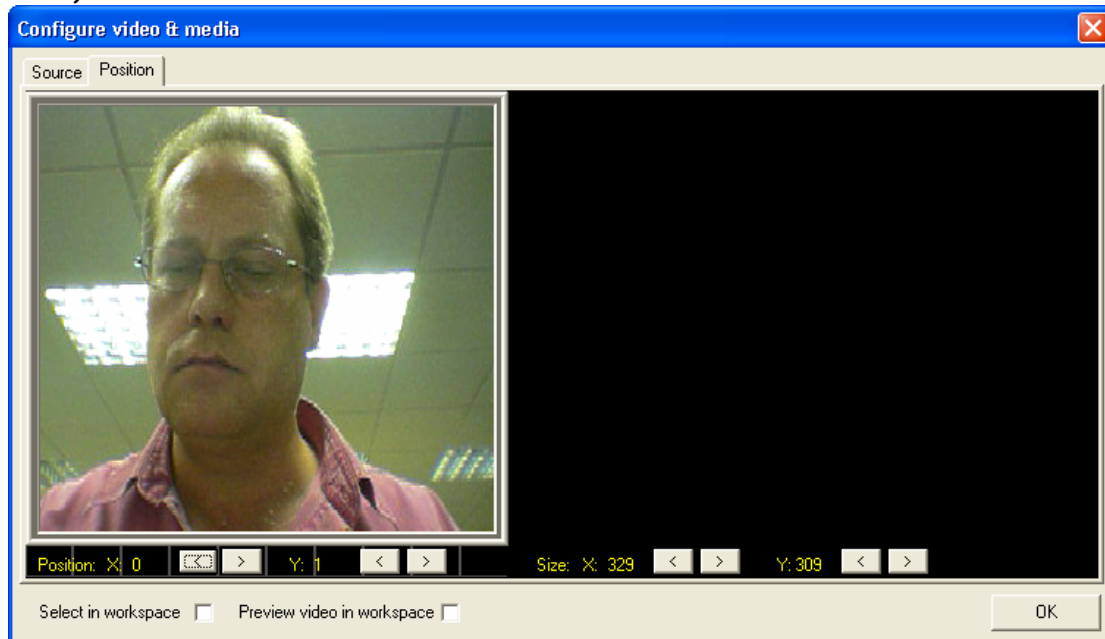
6) Right click Video 1 and select Configure Video.

7) Select source to Local Video Input A:

8) Select a display colour (Aquamarine in this example)



9) Press the Position Tab:

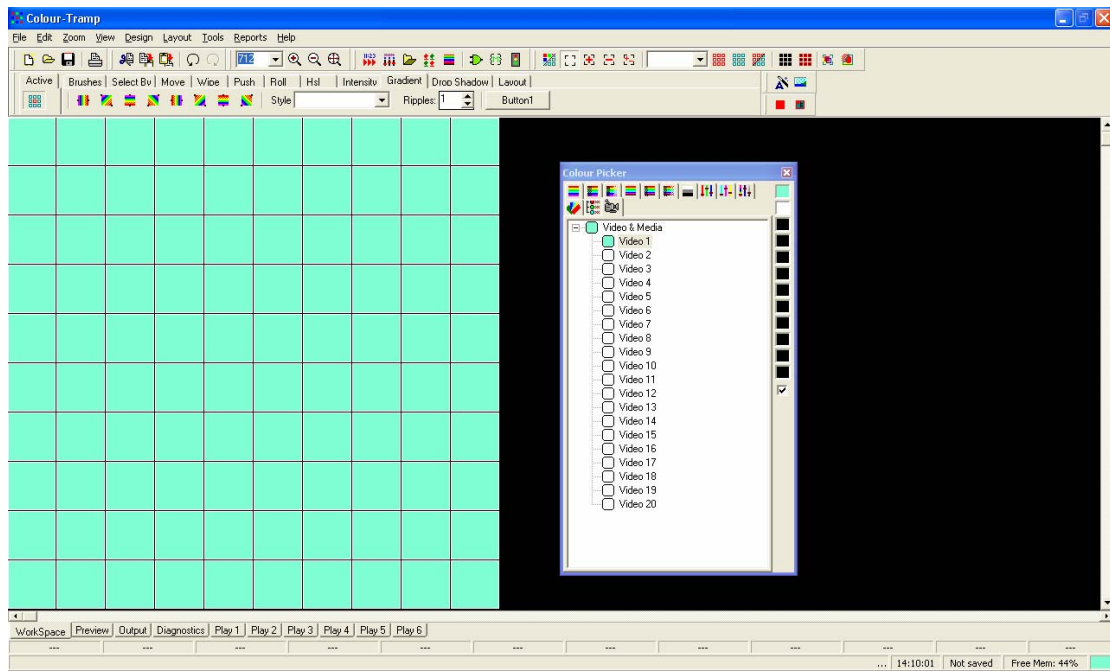


10) Move and re-size the video image to cover the entire layout. You can tick 'Preview Video In Workspace' for a preview.

11) Press OK.

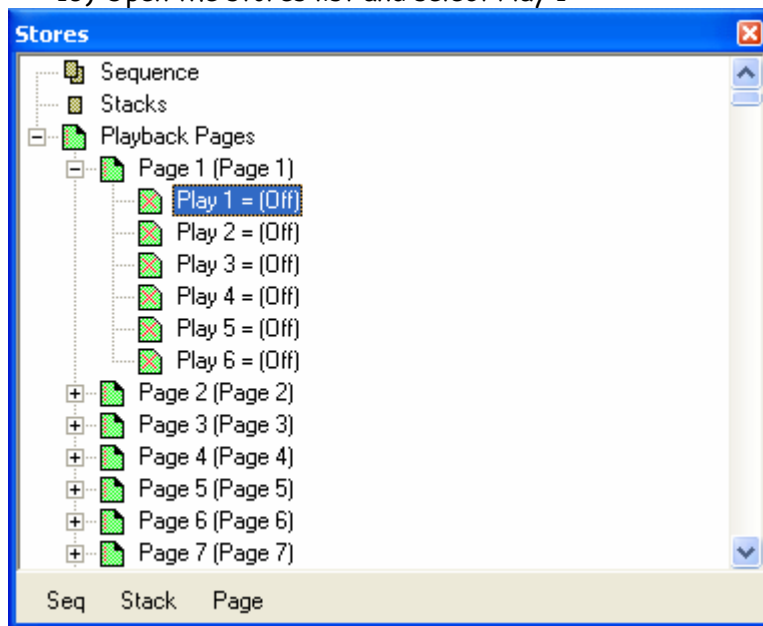
12) The camera is now configured and setup as a palette colour.

13) Select all the cells in the workspace and click on Video 1. The screen should look as follows:

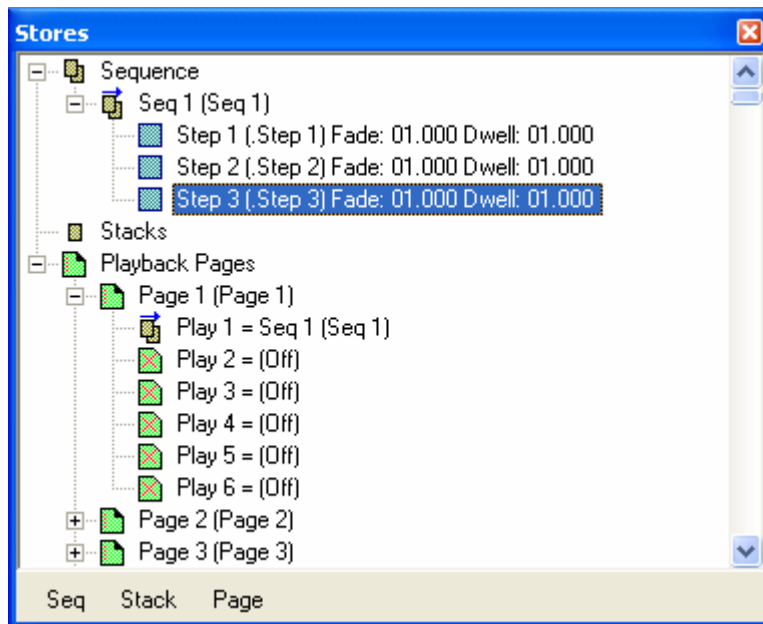


14) Now program a three step sequence for the time lapse effect.

15) Open the stores list and select Play 1:

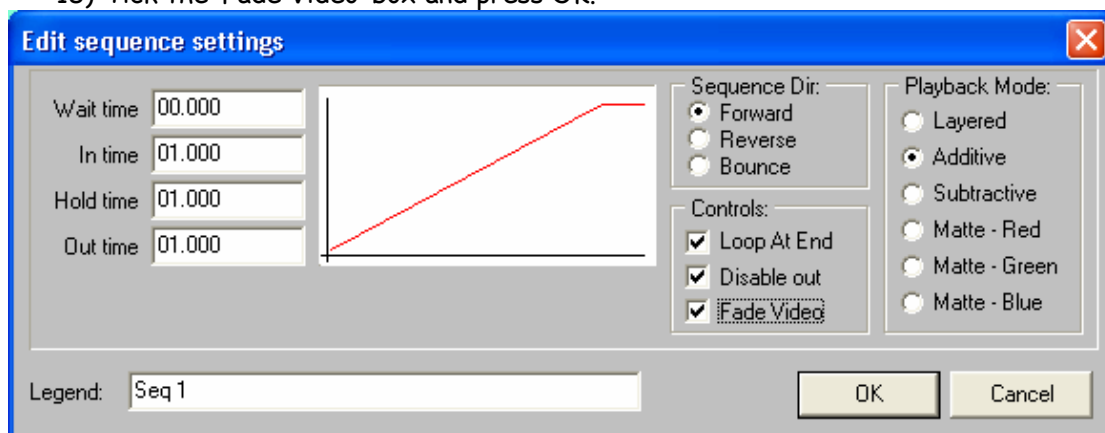


16) Press the record button three times.



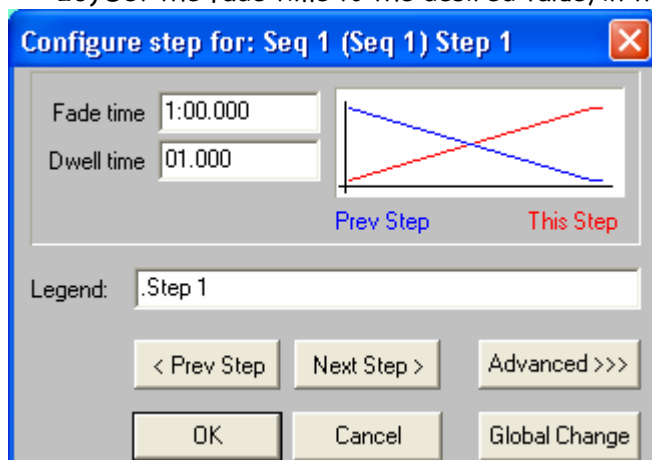
17) Right click on Seq 1 and select properties:

18) Tick the 'Fade Video' box and press OK.



19) Right click on Step 1 of Seq 1 and select properties:

20) Set the fade time to the desired value, in this example 1 hour.



21) Press Global Change.

22) Save the show.

23) Select the playbacks window and press the 'IN' button for playback 1.

24) Select the 'Output' tab to view the results and adjust the camera focus as required.

Adjusting the step fade time of the sequences will adjust the rate at which new video snapshots are processed.

Rev 1. 16/8/06