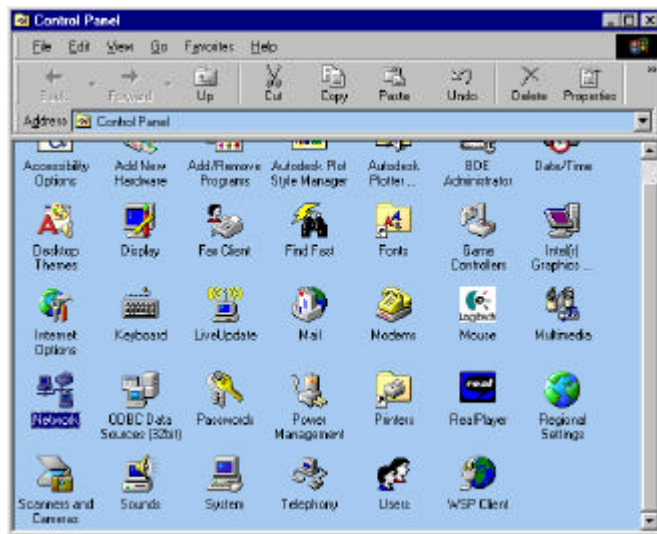
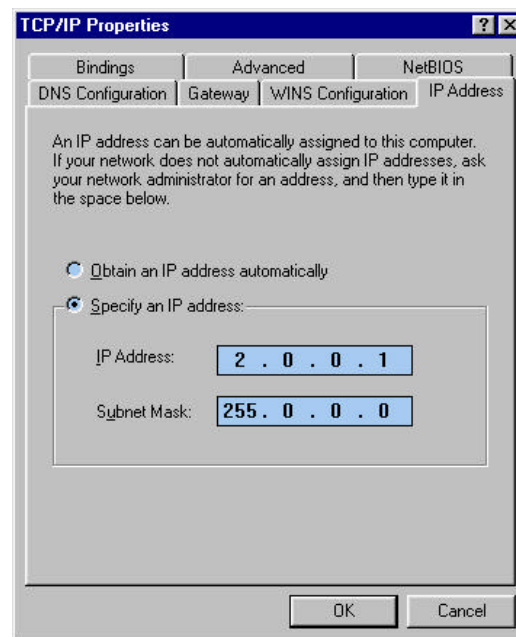
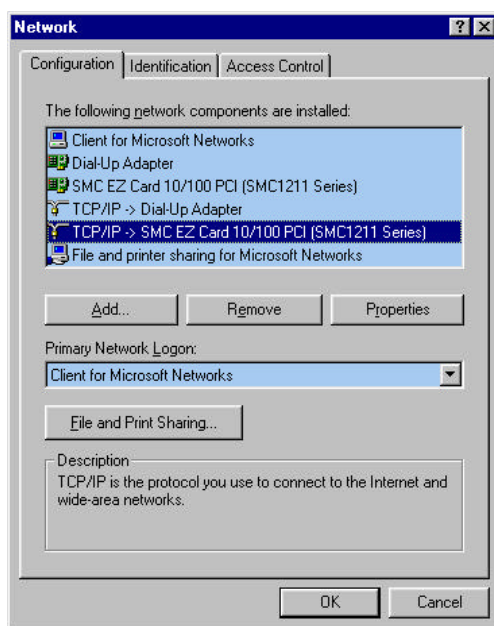


Setting a PC to work with Art-Net, ArtNetView or DMX-Workshop

Press: Start Button -> Settings -> Control Panel

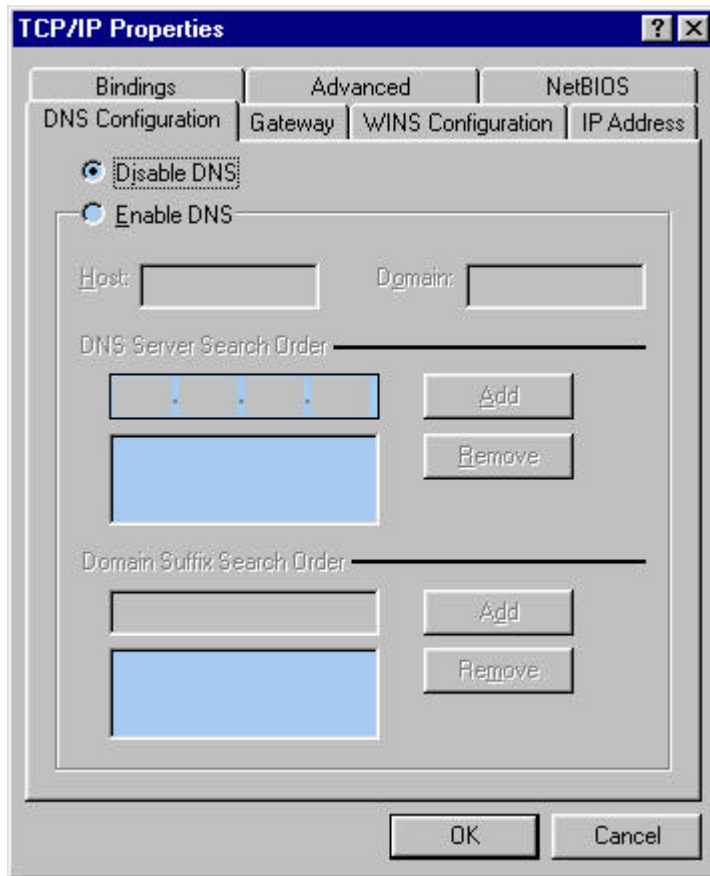


Double Click on Network. Then find the entry for TCP/IP. There may be more than one entry. Select the one that matches the network card in your PC. Click on properties.

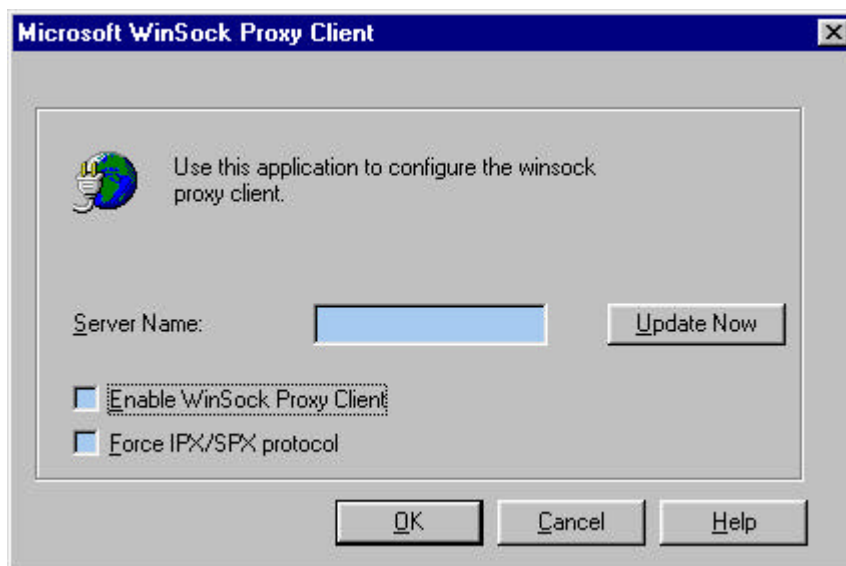


In the IP Address page, select the button marked 'Specify an IP Address'. Fill in the details shown above.

Select the DNS Tab and click on Disable DNS



Press OK and then double click on the 'WSP Client' icon in the control panel. Un-tick both of the boxes.



Press OK and then reboot the PC.