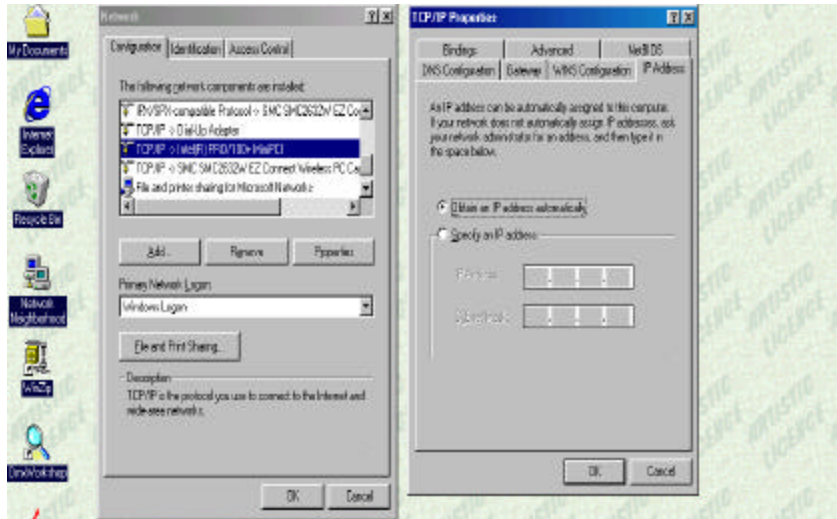
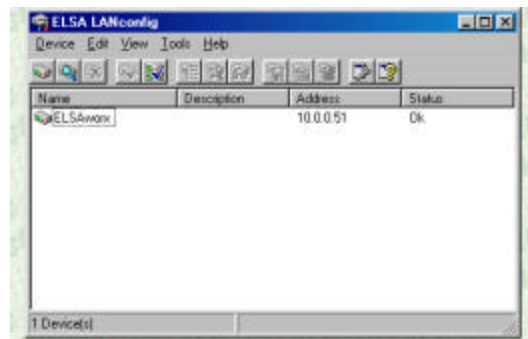


Configuring a ELSA Lancom Wireless L-11

- (1) Install the Lancom software *ELSA LANconfig*
- (2) Ensure that your computers IP address for the TCP/IP protocol for your network card is set to 'Obtain an IP address automatically'. This is to allow your computer to communicate with the device.



- (3) Load the *ELSA LANconfig* software



- (4) Right-click on the device name it has found, and select *configure*

- (5) Select *Configure: TCP/IP* and the following screen will appear. Change the following settings:

Intranet IP address: 2.0.0.51
Intranet netmask: 255.0.0.0
Server: un-checked



- (6) Go back to the network settings and change the TCP/IP settings to:

IP Address: 2.0.0.1
Subnet Mask: 255.0.0.0

- (7) You will now to re-start your computer

Configuring ELSA Lancom Wireless L-11 for point-to-point communication

- (1) To allow two Lancom Wireless access points to communicate point-to-point you'll have to do some more configuration once the steps above have been successful.
- (2) You must first enable the ELSA LANconfig program to allow you to have a higher level of configuration. Load ELSA LANconfig and go to View -> Options. Select 'Complete configuration display'
- (3) Right click on the device you want to set-up and select configure from the pop-up menu. Set the following values within the configuration box.
- (4) Configure: Management -> Interfaces. Ensure all settings are the same as the second Lancom Wireless access point.
- (5) Configure: TCP/IP -> General.
Internet Netmask: 255.255.255.0
Intranet IP address: 2.0.0.51 (2.0.0.52 for second device)
Intranet netmask: 255.0.0.0
- (6) Configure: WLAN Access -> General.
Enable 'Access points can communicate with one another to connect several local networks (point-to-point)
Click 'Access points list' and add the mac address of the second device your connecting to. This can be found by clicking properties under the right click menu. Repeat this with the second device.
- (7) Below are the screen shots of the changes that need to be made

