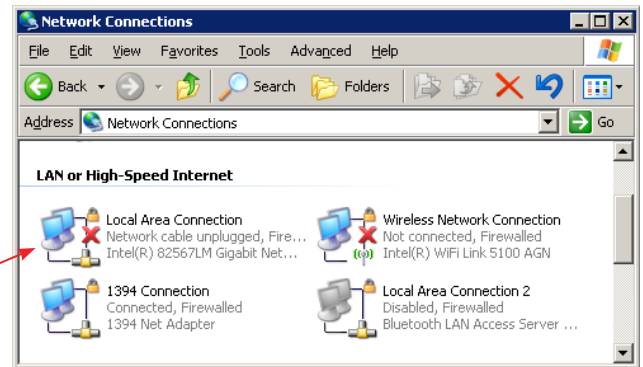




Art-Net: Setting an IP Address on Windows XP

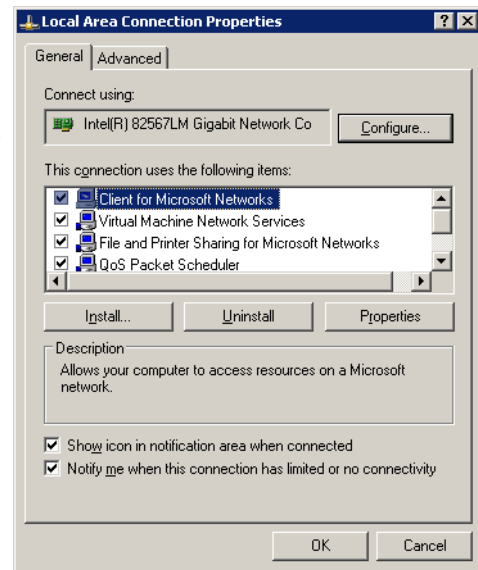
This application note describes how to set an IP address of a PC running Windows XP so that it can be used on a standard Art-Net Network.

1) Click **Start -> Control Panel** and then double click **Network Connections**



2) Select the correct adaptor from the list and right click over the icon

3) Click on **Properties** and a dialog box will appear



4) From the list select **Internet Protocol (TCP / IP)** and click **Properties**

5) Click on the option, **Use the following IP address**

6) Use the settings below;

IP Address: 2.0.0.1

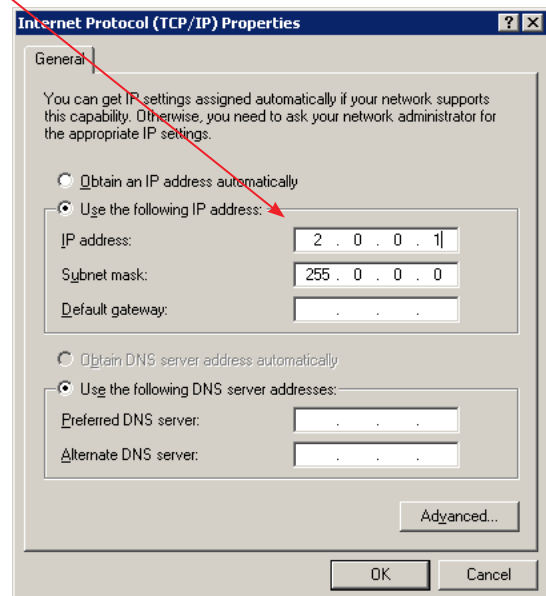
Subnet Mask: 255.0.0.0

Default Gateway: *Leave blank*

Preferred DNS server: *Leave blank*

Alternate DNS server: *Leave blank*

7) Click **OK** on the dialog box **Internet Protocol (TCP / IP) Properties**



8) Click **OK** on the dialog box **Local Area Connection**

9) The computer may take up to a minute for the new settings to be implemented.

